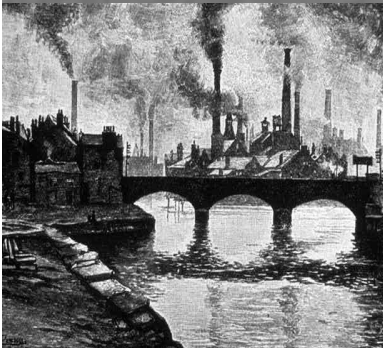
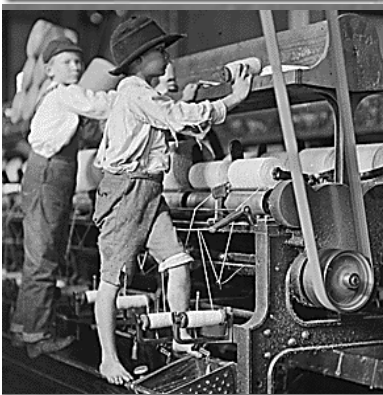
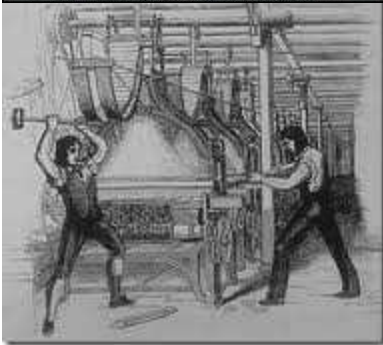
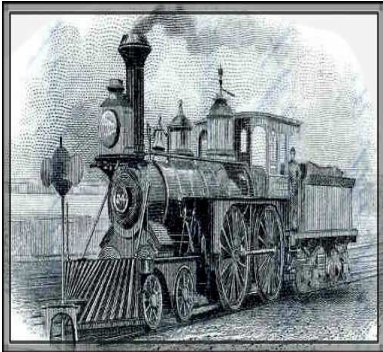


Industrial Revolution Begins

Ms. Ramos
Alta Loma High School

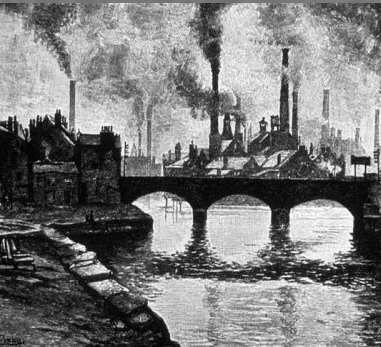
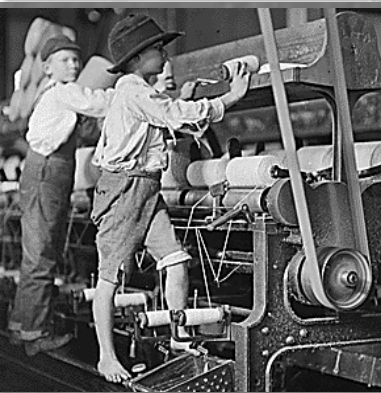
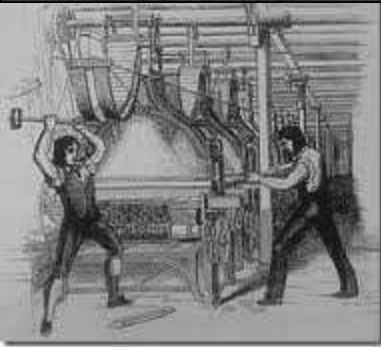
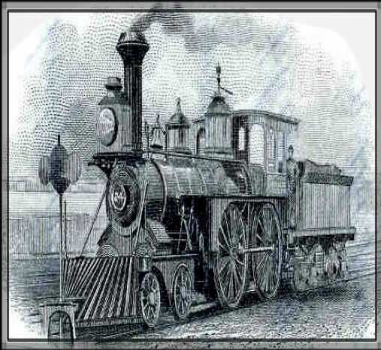


© Tony Northrup

Why was
England the
first to
industrialize?

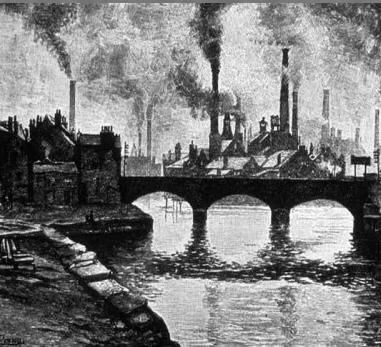
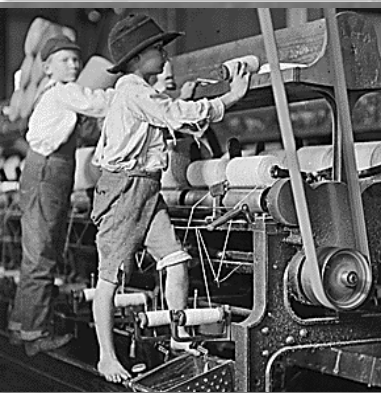
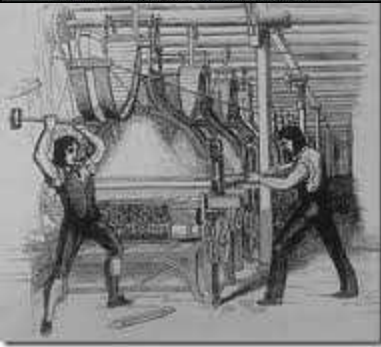
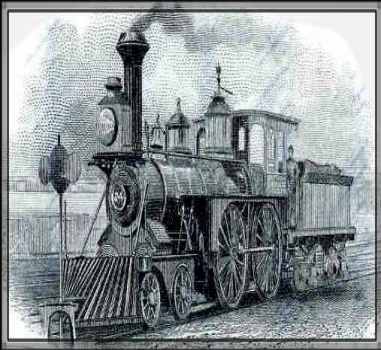
BE SARGG

- Banking
- Entrepreneurship
- Stable
- Agricultural
- Revolution
- Geography
- Government

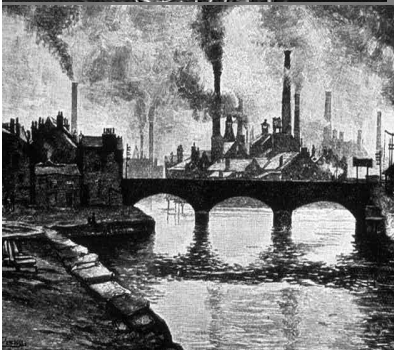
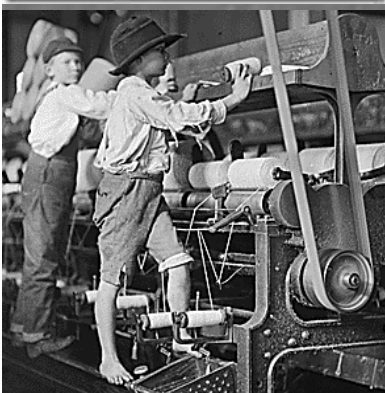
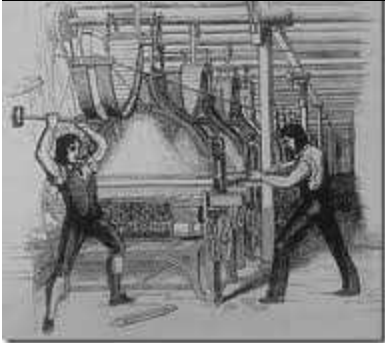
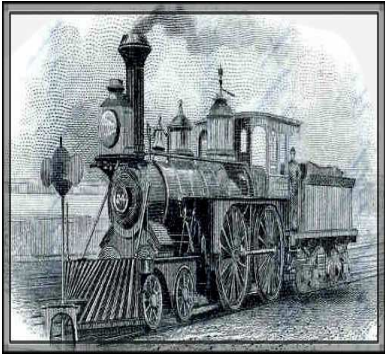


Banking

- capital to invest

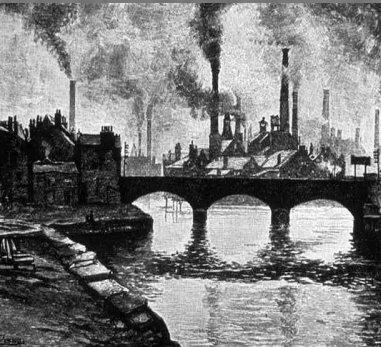
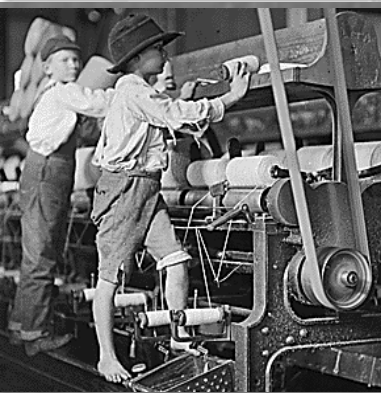
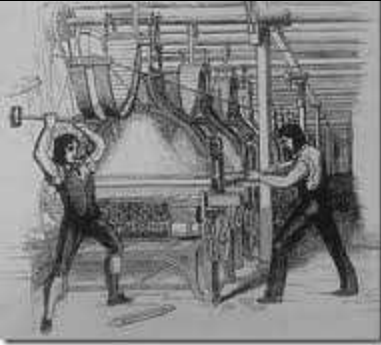
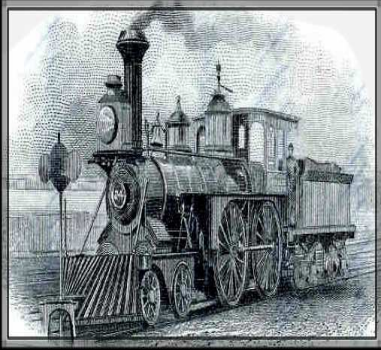


<http://www.benzinga.com/trading-ideas/long-ideas/10/12/694617/sterling-etf-a-sterling-play-for-2011>



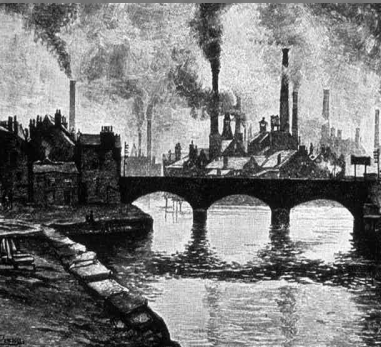
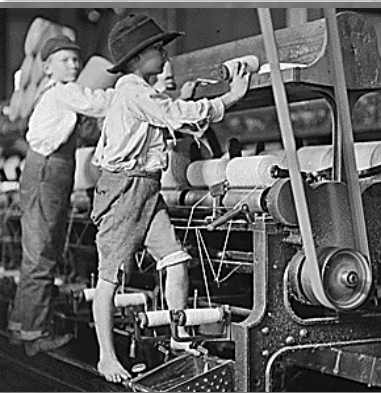
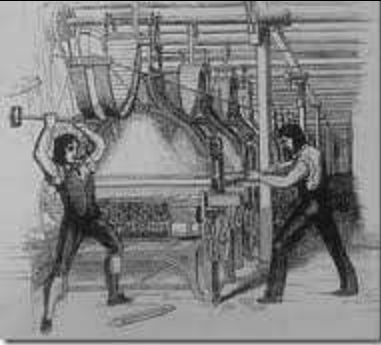
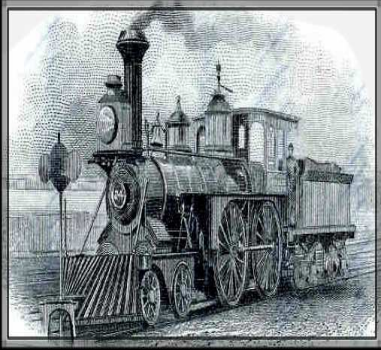
Entrepreneurship





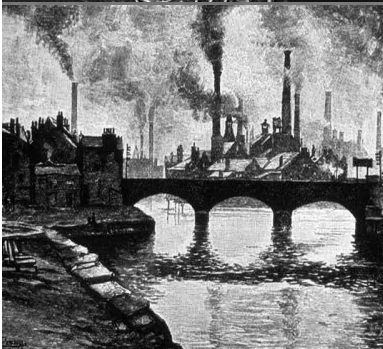
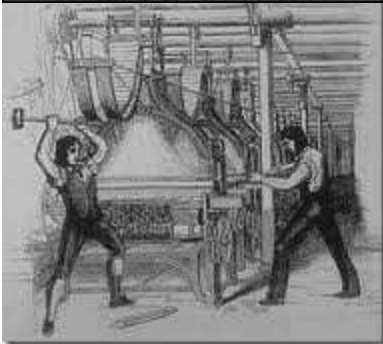
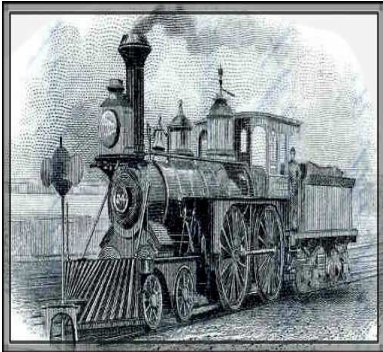
Stable Government

- No war at home
- Domestic trade not interrupted
- Laws & property rights include investment



Agricultural Revolution

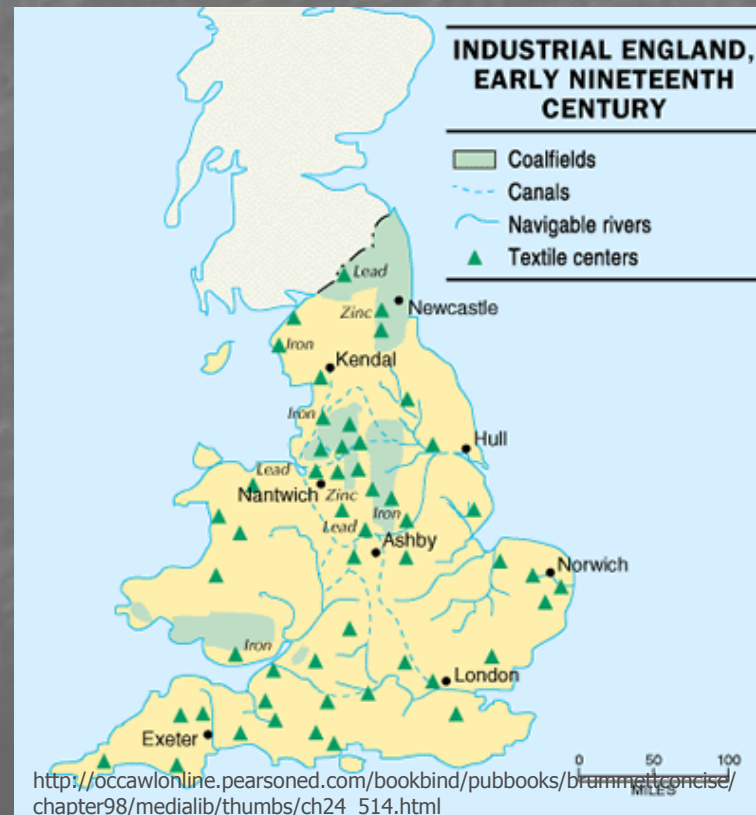
- More people
- Agric profit ||| ➡ \$ to invest
- Greater demand for goods

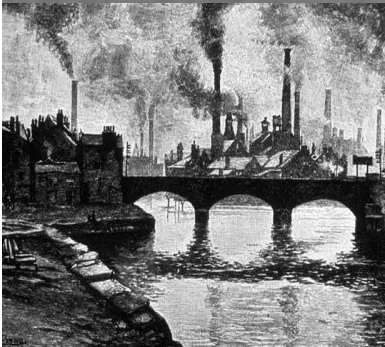
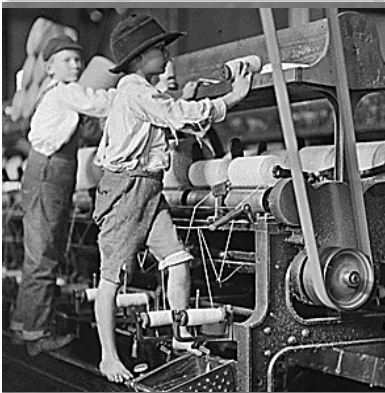
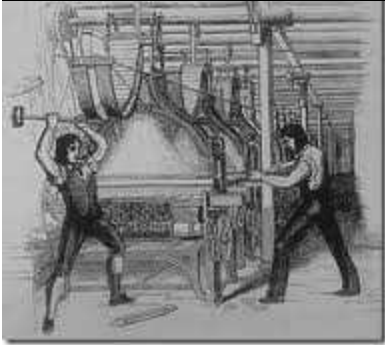
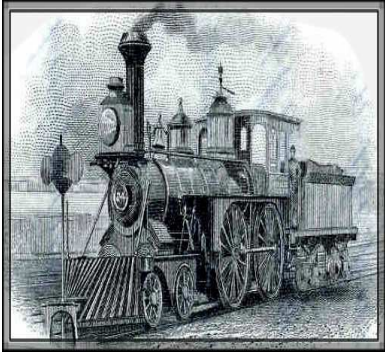


Geography

■ Resources to make goods

- Coal
- Iron
- Rivers
- Ports





Go to the number of the factor you believe was most important to industrialize

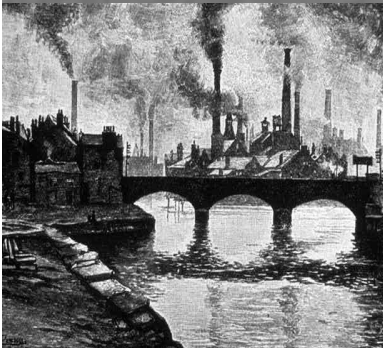
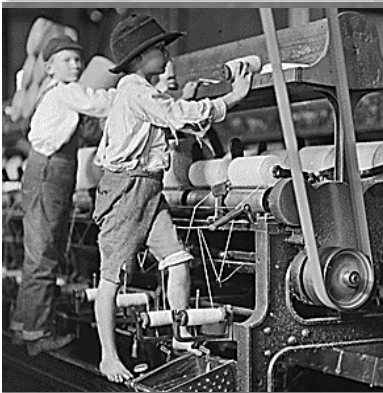
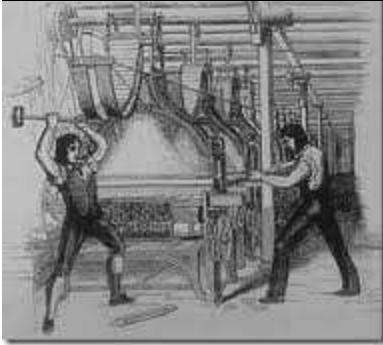
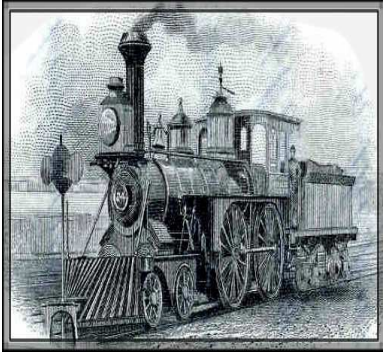
1- Banking

2- Entrepreneurship

3- Stable government

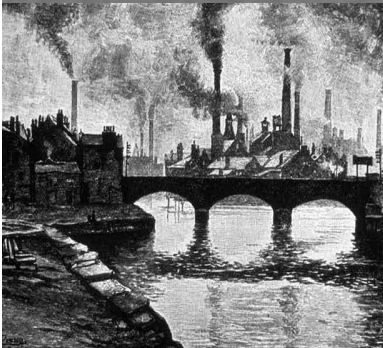
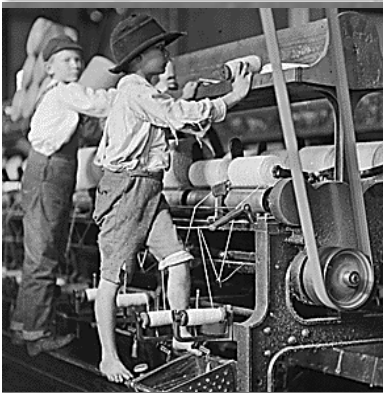
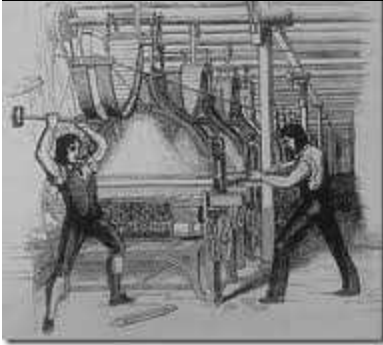
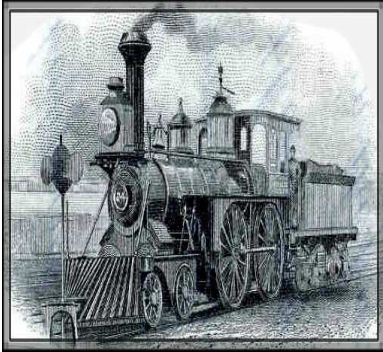
4- Agricultural
revolution

5- Geography



First factories

- Sheds by streams
- Workers go to factory



Transportation

- Canals
- Bridges
- Steam locomotive!!!
 - Can go over land
 - 1st major rail line:
Liverpool -Manchester

Social & Economic Impact of the Railways

People were able to travel greater distances for leisure & to work

Seaside towns developed; the railways made cheap day trips possible

Newspapers could be sent from London all over the country.

People became more interested in politics & this led to the growth of political parties

Turnpike Trusts, canals & stage coach companies could not compete & went bankrupt.

Railway engineering towns grew up, E.g. Crewe & Doncaster.

Townspeople were able to receive meat, fish, milk and vegetables brought in whilst they were still fresh by the railways.

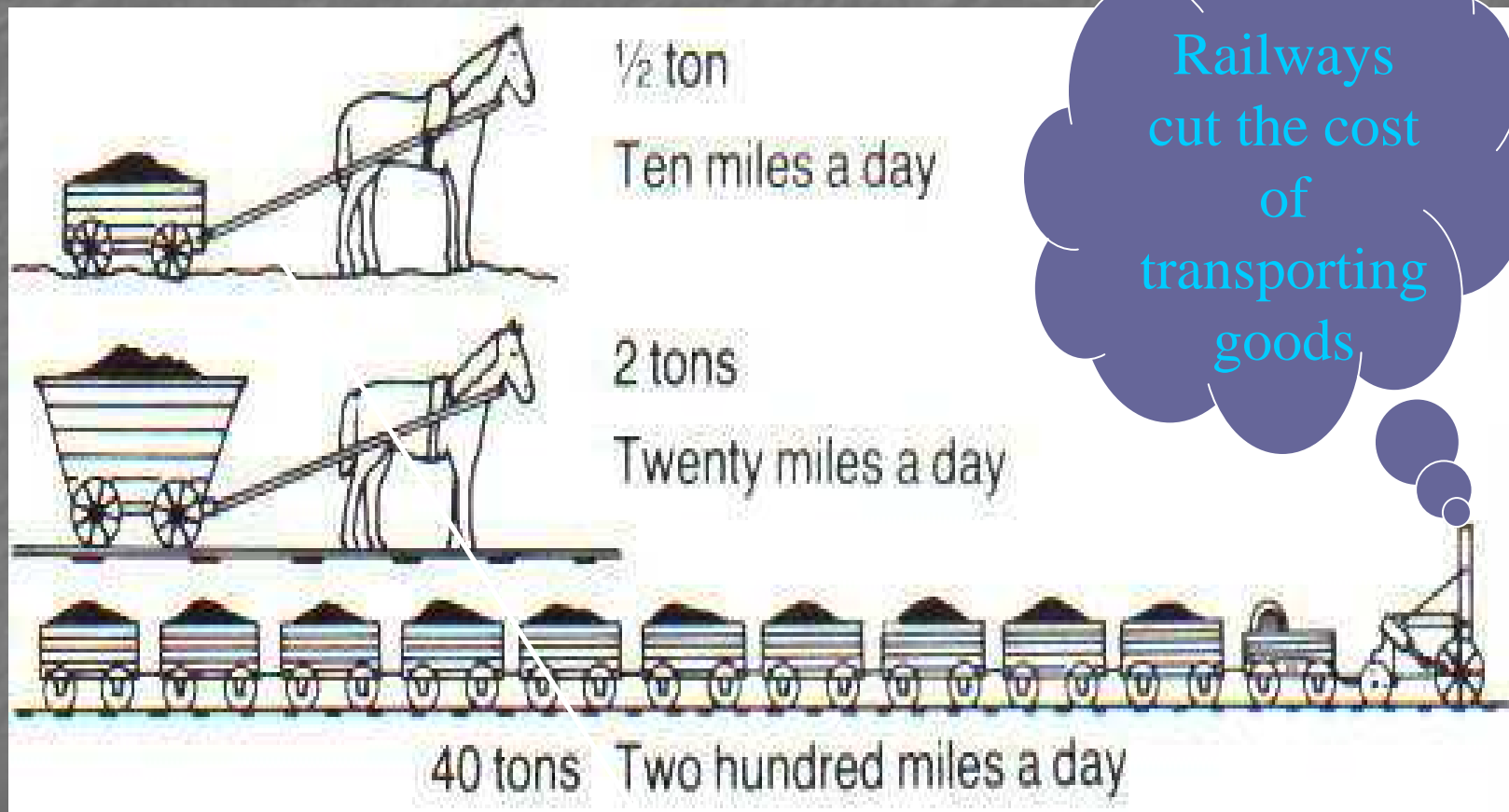
Industry grew, because the railways needed coal & iron; railways in turn allowed factories to transport their goods to markets.

The Post was speeded up

First Class Mail
Ms. Ramos

Fish & Chips

Economic Changes





www.SchoolHistory.co.uk

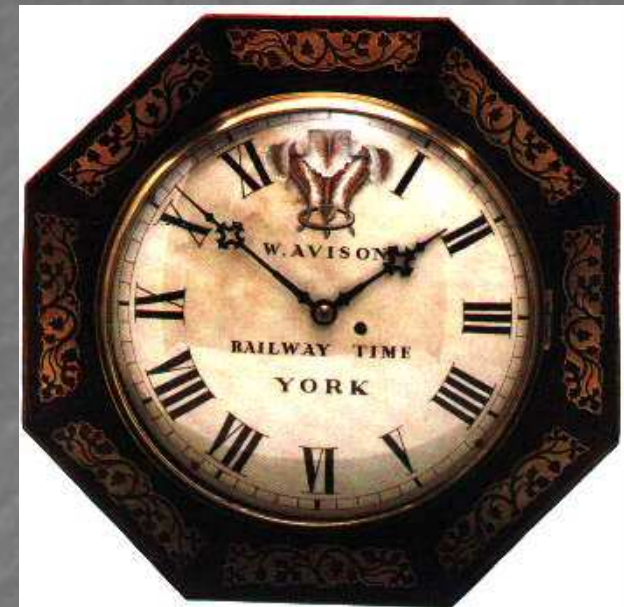
How many horses would be needed to transport 40 tons by road?

How did railways create more jobs?



Social Changes

1836		1850	
JOURNEY TIMES FROM LONDON (IN HOURS)			
43	EDINBURGH	12 $\frac{1}{4}$	
24	LIVERPOOL	6 $\frac{1}{2}$	
18	EXETER	4 $\frac{3}{4}$	
11	BIRMINGHAM	3	
6	BRIGHTON	1 $\frac{1}{4}$	



GMT?

Cultural Changes



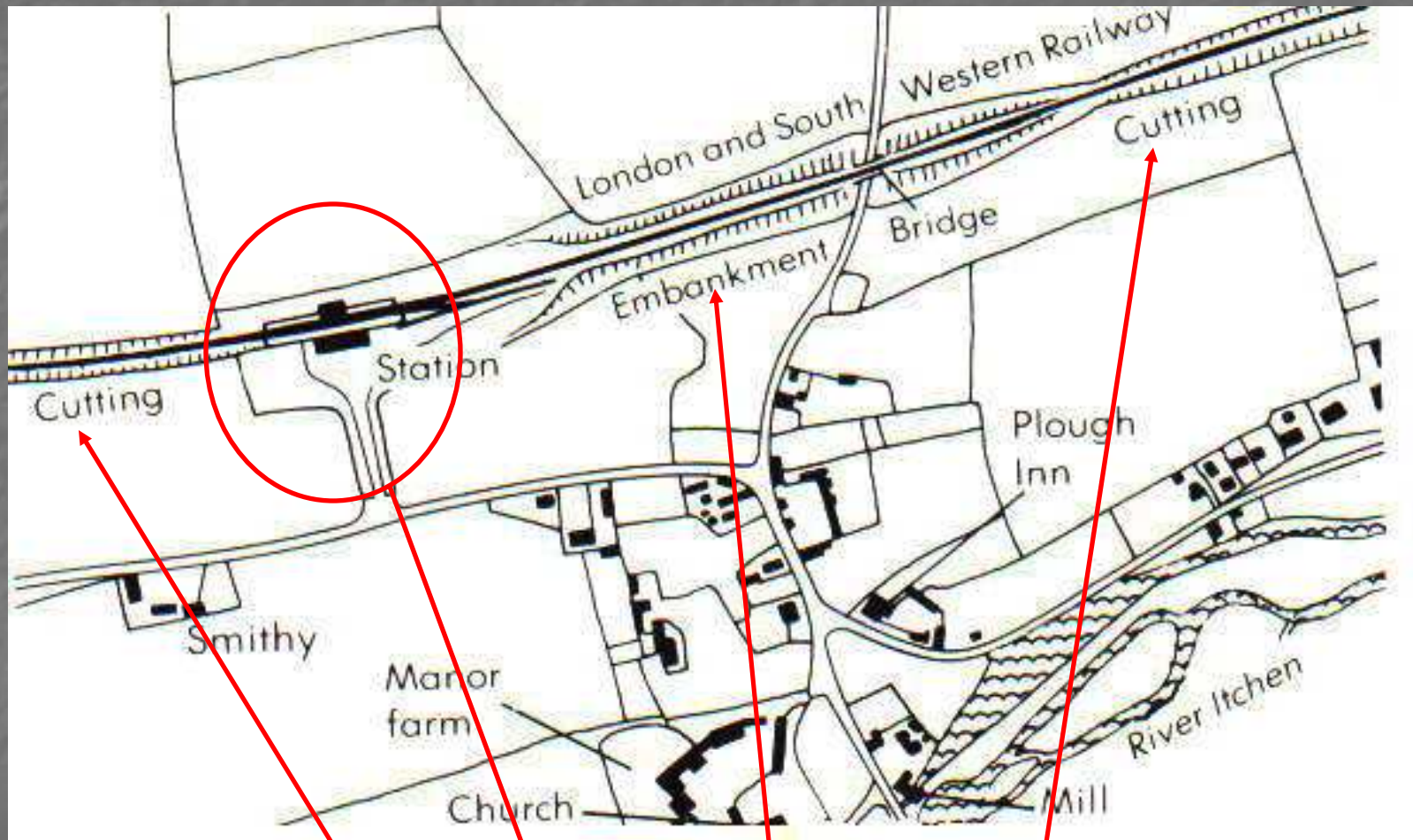
www.SchoolHistory.co.uk

What is this woman doing?



Which famous books did Charles Dickens write?

Environmental Changes

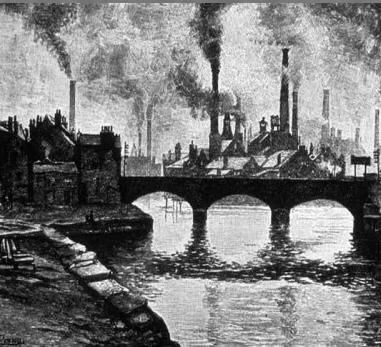
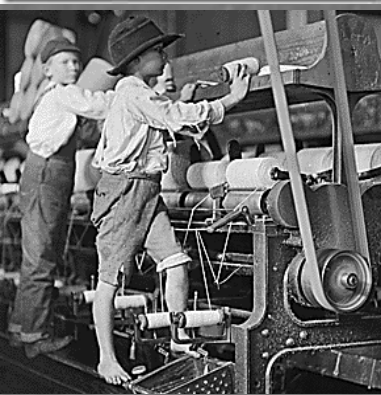
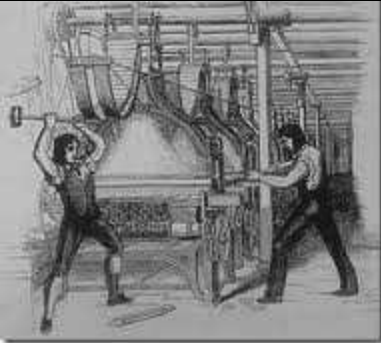
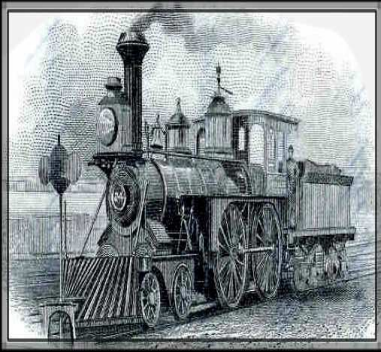


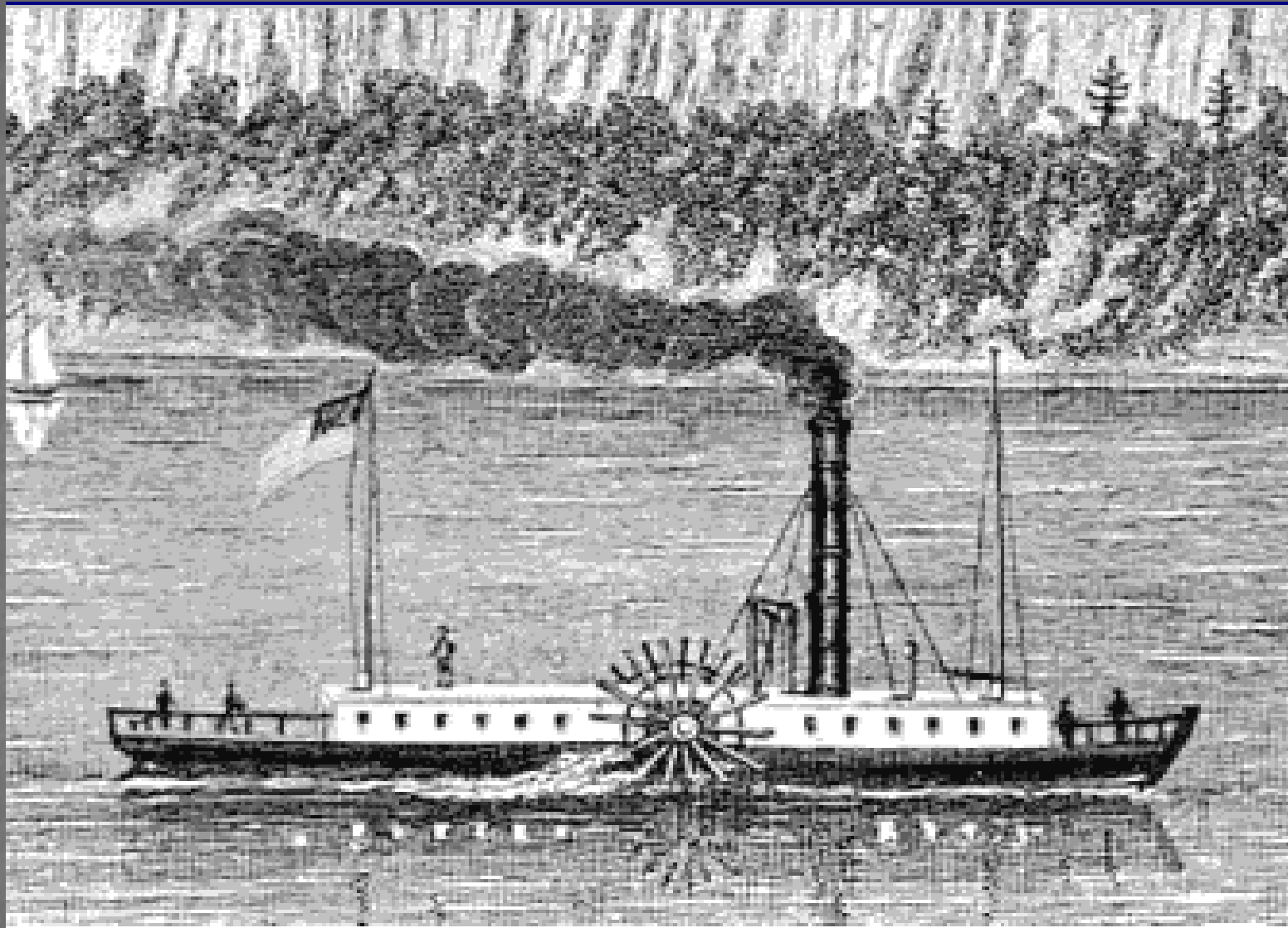
www.SchoolHistory.co.uk

Impact on the landscape?

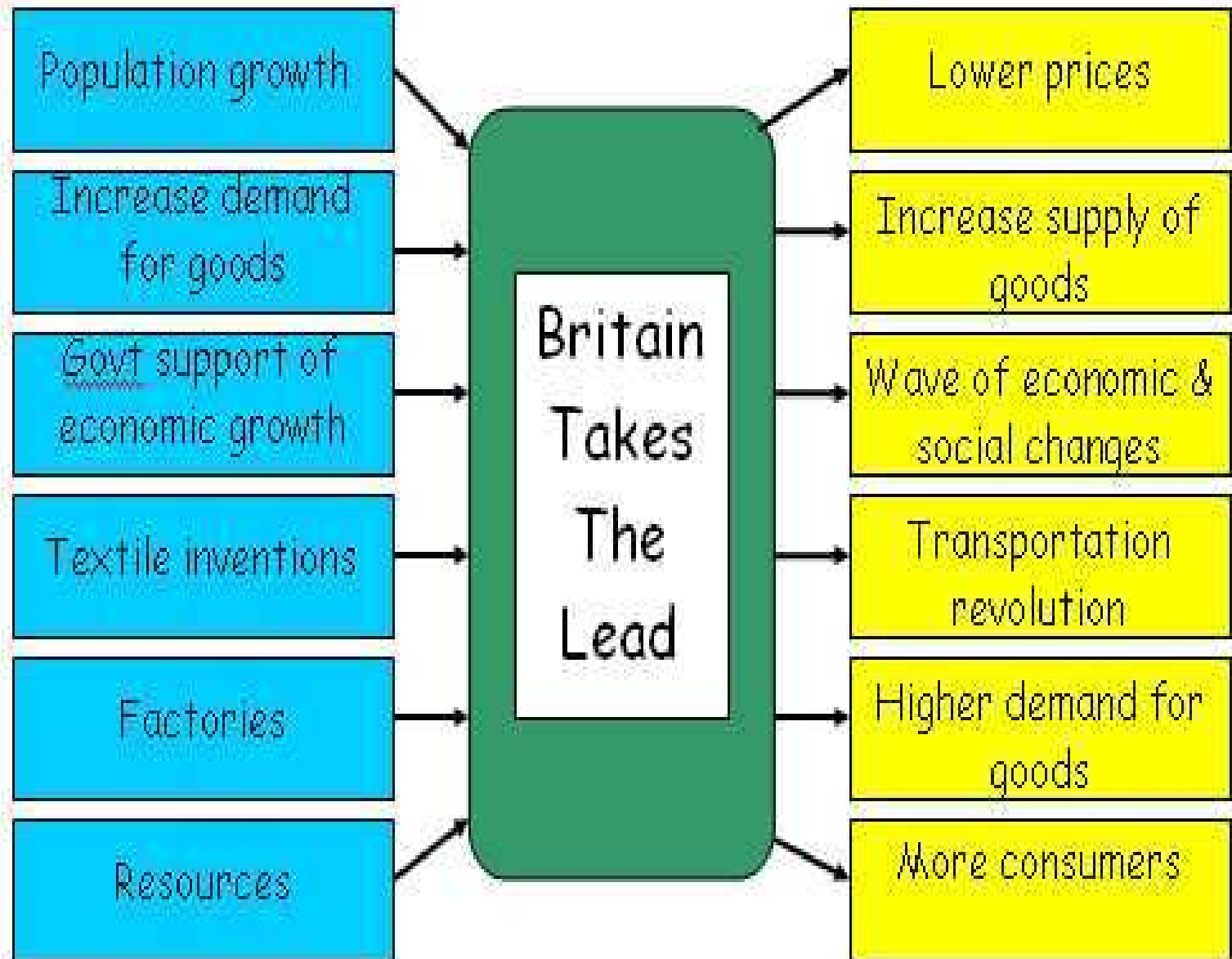
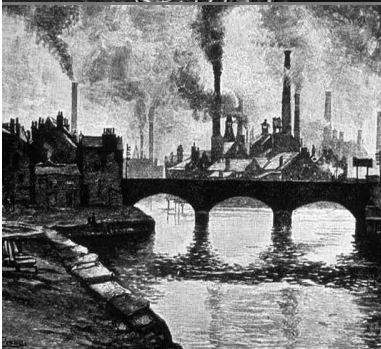
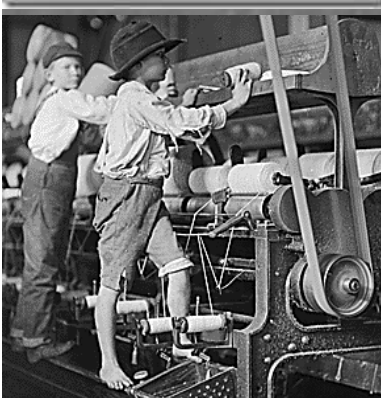
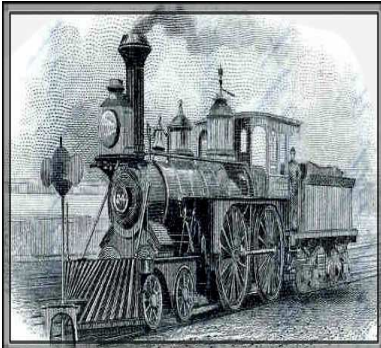
Sea Travel

- Robert Fulton
 - Steam engine
 - *Clermont* up Hudson River
 - FAST!!!!--- 5mph
- Steam freighters w/iron hull
 - 10-20x cargo of wooden ships



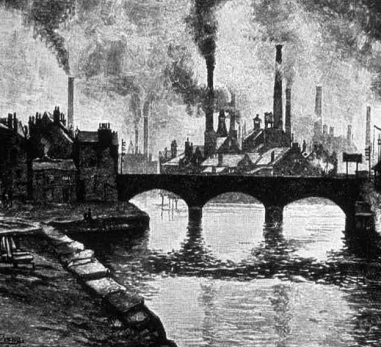
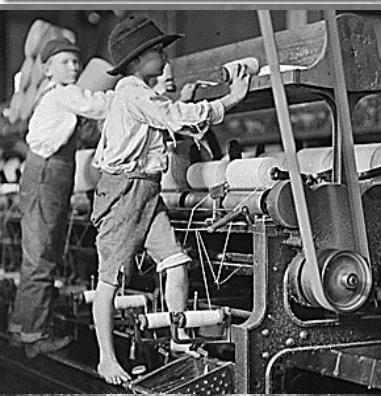
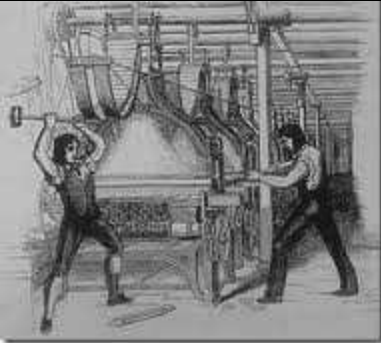
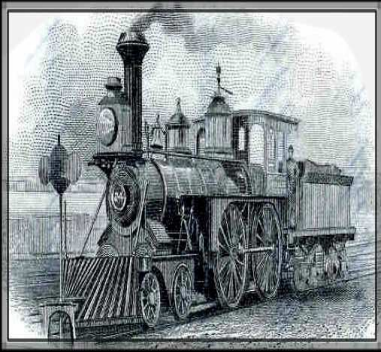


The Clermont, Fulton's first **steamboat**, sails up the Hudson River on its run from New York Harbor .



Homework

- Using your textbook, create a chart of major inventions from the Industrial Revolution.



Inventor	Invention	Description